



VILINK[®]

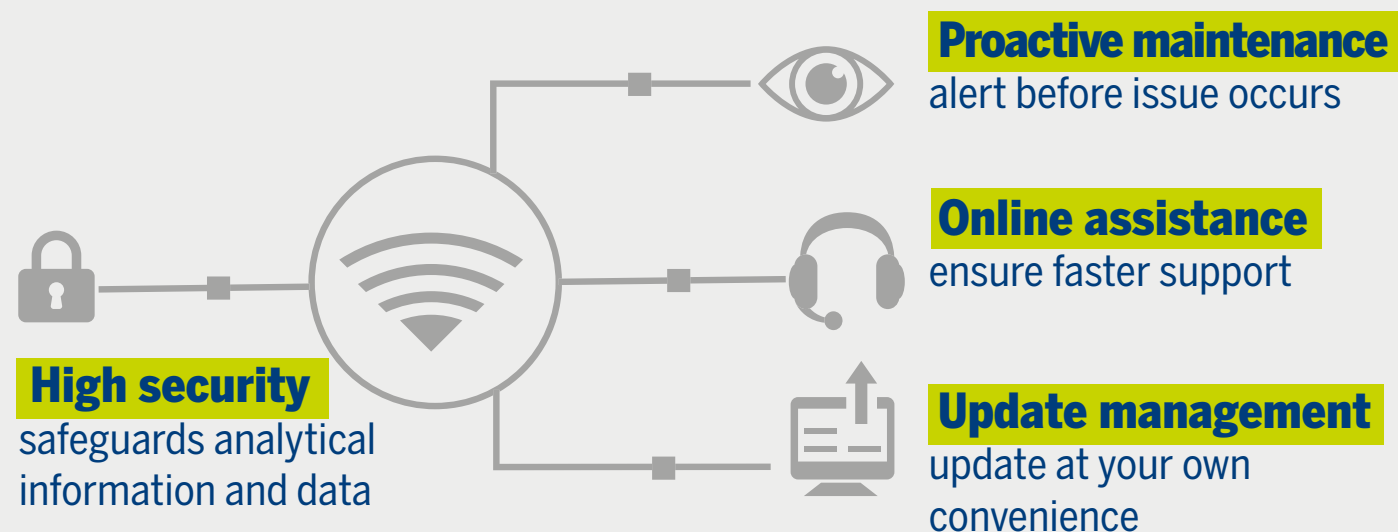
INTELLIGENT INSTRUMENT MANAGEMENT SYSTEM

Keeping your lab working



PIONEERING DIAGNOSTICS

VILINK®, the safe, secure and simple way to increase instrument uptime in your lab:



ADOPTED WORLDWIDE

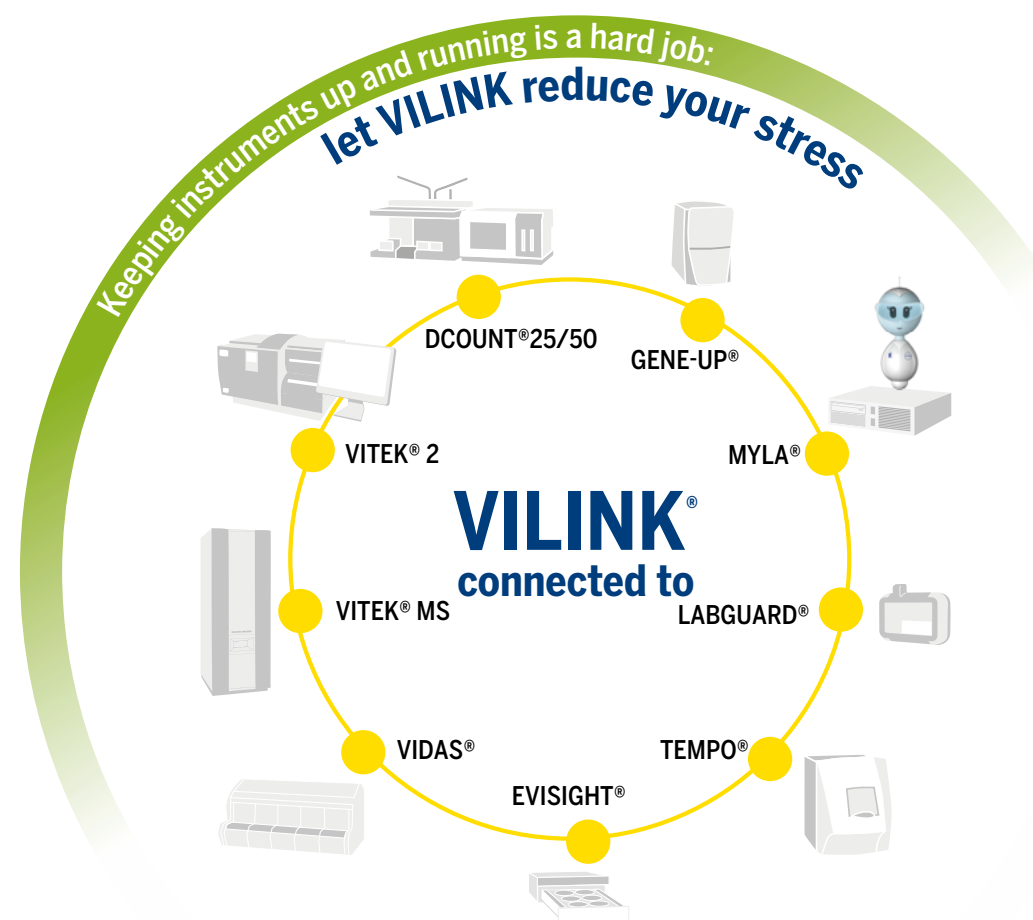
VILINK software helps keep your bioMérieux instruments up and running via remote monitoring, updates, maintenance, and issue diagnosis and resolution. One in two of bioMérieux's customers already benefits from increased instrument uptime in labs worldwide, thanks to VILINK: why not join them?

FASTER MAINTENANCE

Issues currently take on average 2 days from notification to on-site resolution, 8x longer than it takes for them to be resolved remotely via VILINK (on average just 6 hours).

"Remote access (VILINK) allows us to troubleshoot in real-time in most cases, with minimal interference to our laboratory workflow"

Margarida Pinto
Director of CHLC Group Microbiology Lab
Lisbon, Portugal



HIGH SECURITY STANDARDS

Your analytical information and data security are crucial, which is why VILINK provides you with the highest levels of externally validated security. Need help talking with your IT department? No problem. We speak their language and can help you every step of the way, from the detailed technical specifications to our IT experts, who are on hand to answer any queries you or your IT department may have.

BENEFITS INCREASING OVER TIME

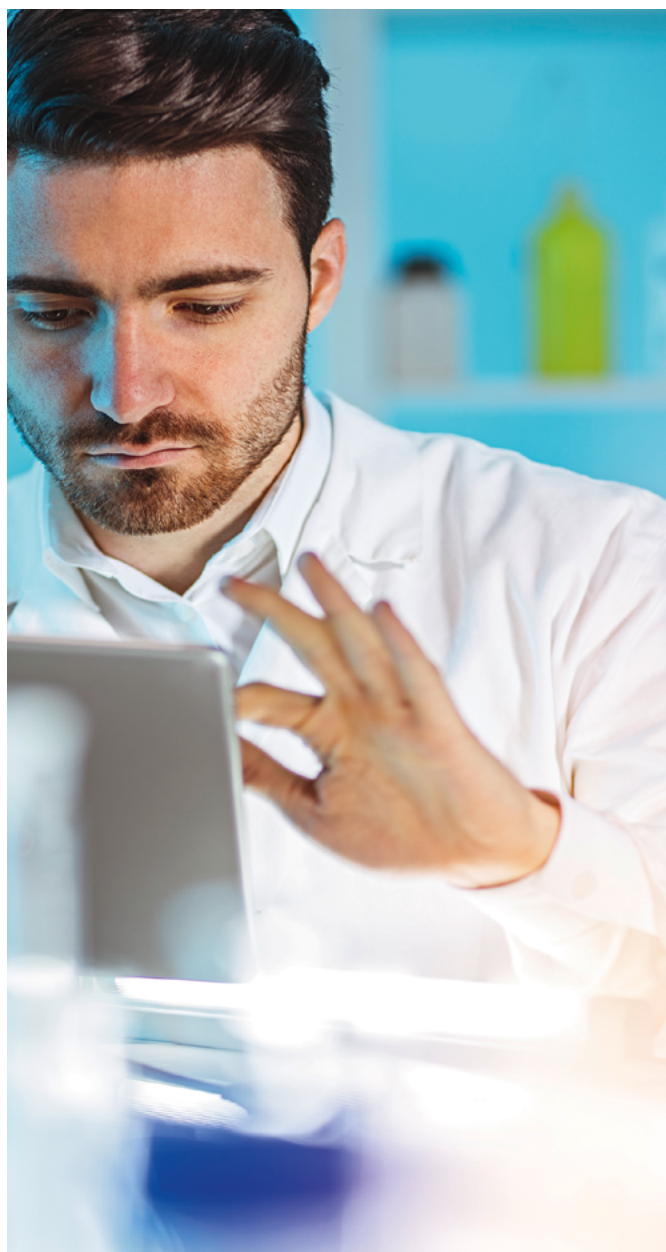
Once installed, the benefits of VILINK system will increase exponentially: corrective maintenance, troubleshooting and higher rates of first call resolution, and offer an increased capability for productive maintenance – effectively fixing issues before they emerge.



* Consult your local representative for availability.



So, interested in increased instrument uptime?



VILINK®: It's as easy as 1, 2, 3...

1

Call your local bioMérieux representative now

2

We'll set up the pre-installation visit
between your IT experts and ours

3

We'll install VILINK for you
in a maximum of 20 minutes
during scheduled maintenance

That's it! You're connected.